

LIGHT DUTY FIXINGS

Hollow Wall Plastic Toggle

Grip Range from 10mm - 20mm

Nylon, internal thread
Dry, internal applications

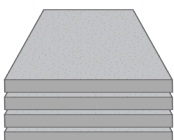
FEATURES & BENEFITS

- Light duty applications.
- Ideal for plasterboard, plywood, masonite & other thin panel materials.
- Fully removable if required.
- Single piece anchor body.
- Anchor body stays in place when screw is removed.

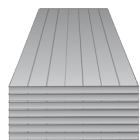
APPLICATIONS/TRADES

- Light duty wall hangings

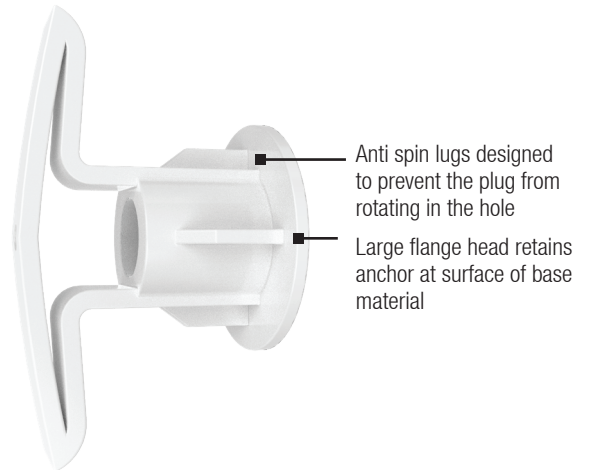
SUBSTRATE SUITABILITY



PLASTERBOARD



THIN PANEL /
WALL BOARDS



Compatible to use with
Bremick Utility Hook
HHDUM050002



HOLLOW WALL PLASTIC TOGGLE

LIGHT DUTY FIXINGS

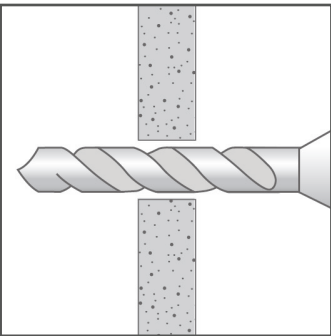


RANGE

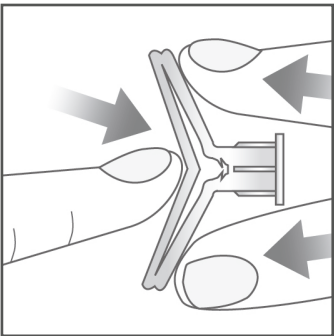
HOLLOW WALL PLASTIC TOGGLE						
Product Code	Pack Qty	For plaster-board / panel thickness range (mm)	Base material drill hole Ø (mm)	Minimum screw length (mm) = fixture thickness + ...	Suits screw gauges	Maximum load in any direction* (kg)
TPTMP080102	100	10 - 12	8	22	6g - 8g	5
TPTMP080122		14 - 16		25		
TPTMP080162		17 - 20		28		

Note: * Capacity for gypsum plasterboard with minimum thickness of 10mm

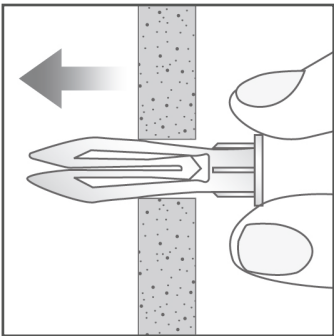
INSTALLATION



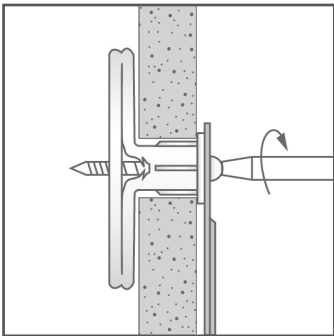
Drill an 8mm diameter hole through the base material.



Collapse the legs of the anchor as shown, holding them closed together with your fingers.



Push the anchor through the base material until it is firmly seated. Tap gently with a small hammer if required.



Pass the correct length 6g - 8g screw through the item to be attached and into the anchor body, screw carefully by hand to avoid over tightening.

Whilst every care was taken in the preparation of this publication, Bremick® accepts no responsibility for the accuracy of the information supplied. Bremick® reserves the right to make alterations to specifications as part of ongoing development and improvement. This publication serves as a guide and it's the responsibility of the end user to ensure suitability for their application. The contents of this publication are the exclusive copyright of Bremick® and may not be reproduced without permission.