

NON SAFETY CRITICAL

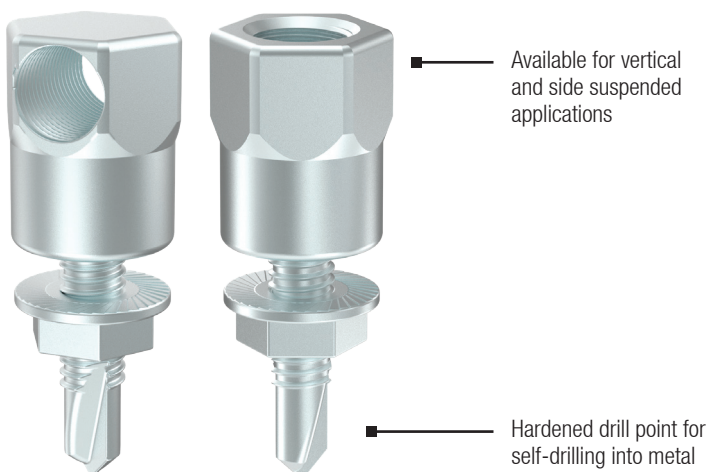
THREADED ROD HANGER METAL FIXING

M10 size

Zinc Plated
Dry, internal applications

FEATURES & BENEFITS

- Suitable for M10 threaded rod
- Vertical or side mount options available
- Fast to install
- Self drills into metal sections

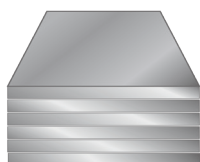


APPLICATIONS/TRADES

- Suspending threaded rod
- Suspending conduit
- HVAC ductwork and strut channels
- AC ducting
- Hanging pipe
- Cable tray applications

**ZINC
PLATED**

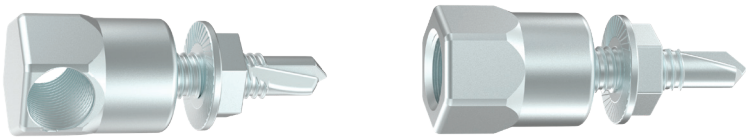
SUBSTRATE SUITABILITY



STEEL

THREADED ROD HANGER - METAL FIXING

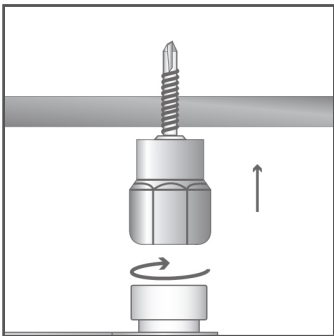
NON SAFETY CRITICAL



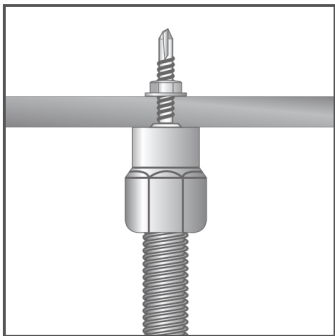
RANGE

Product Code	Pack Quantity	Version	Socket Size AF (mm) SW	To suit threaded rod	Steel Thickness (mm)
ASHSZ060251	100	Side	16	M10	1 – 3mm
AVHSZ060251		Vertical			

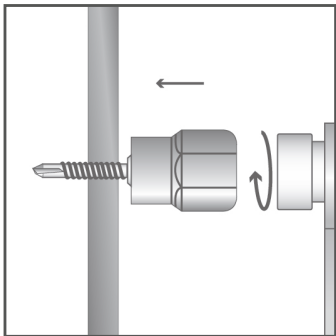
INSTALLATION



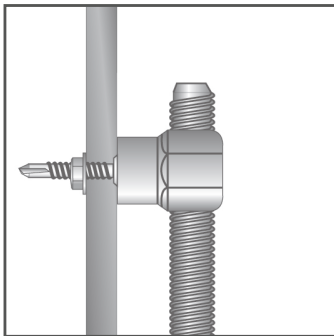
Attach the correct sized socket driver to the hanger and drive until the anchor is securely fastened, take care not to overdrive.



Secure the hanger by fitting the supplied nut.



For additional connection strength thread nut supplied onto the hanger from behind the metal substrate.



Ensure the threaded rod is fully threaded through the fastener. Secure rod with M10 nut(s) for additional security.

Whilst every care was taken in the preparation of this publication, Bremick® accepts no responsibility for the accuracy of the information supplied. Bremick® reserves the right to make alterations to specifications as part of ongoing development and improvement. This publication serves as a guide and it's the responsibility of the end user to ensure suitability for their application. The contents of this publication are the exclusive copyright of Bremick® and may not be reproduced without permission.